

REAR WEIGHT



Application:

Hooked in the linkage drawbar, the rear weight is used as a counterweight that balances the load in the front loader.

Operating principle:

The Hauer rear weights are available for various link arm categories and are hooked to the linkage drawbar. Made from reinforced concrete, the weight is offered in two sizes.

Advantages:

- Simple and low-cost counterweight
- Concrete block complete with steel formwork and sturdy hooks
- Compact design

Standard specification:

- Cat 1/2 lower link spacing
- Steel elements finished in graphite grey, concrete unpainted

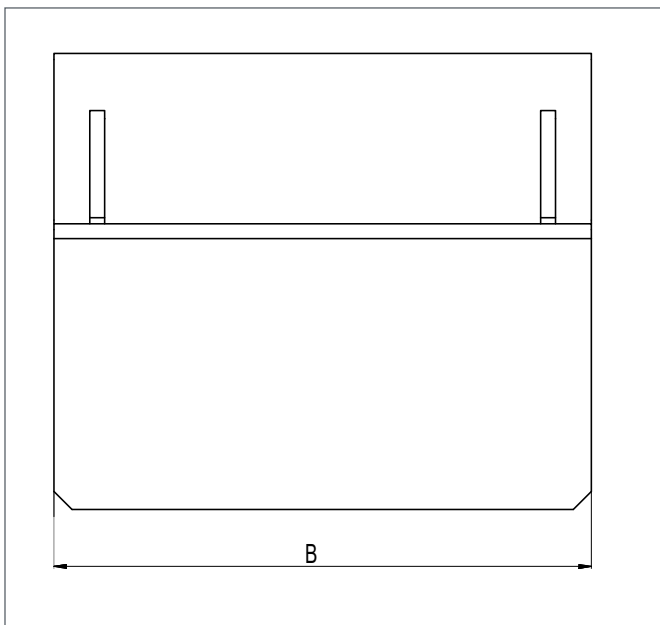
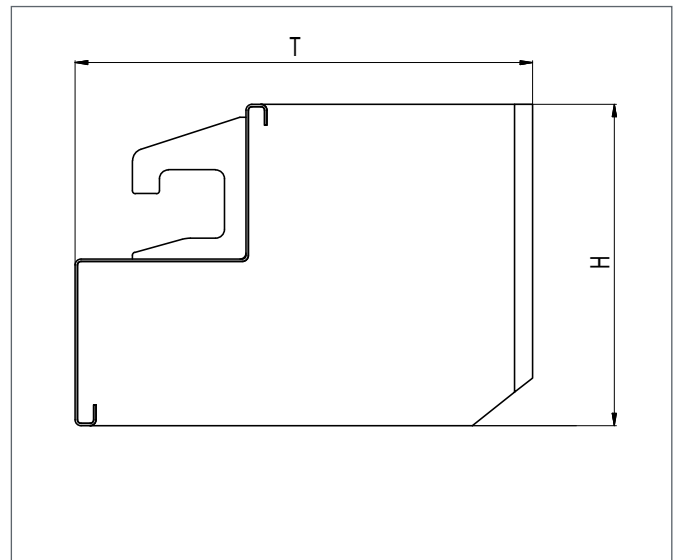
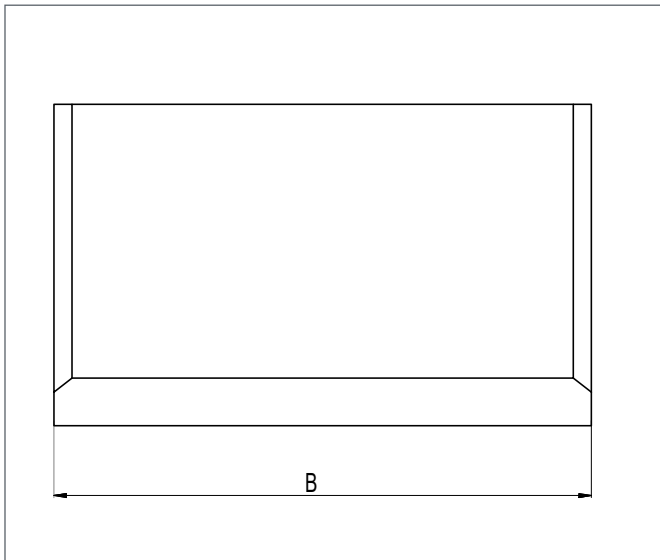
Options:

- All RAL colours
- The steel formwork complete with hooks is also available without the concrete block for making your own block



INNOVATION WITH TRADITION FOR LIFE.

| Technical data | Width B mm | Depth T mm | Height H mm | Lower link category | Weight kg |
|---------------------------|------------|------------|-------------|---------------------|-----------|
| 650kg rear weight, cat. 1 | 850 | 711 | 540 | 1 | 650 |
| 650kg rear weight, cat. 2 | 900 | 681 | | 2 | 650 |
| 750kg rear weight, cat. 1 | 850 | 806 | | 1 | 750 |
| 750kg rear weight, cat. 2 | 900 | 766 | | 2 | 750 |
| Rear weight hooks | 850/900 | - | | 1/2 | 35 |



© Hauer 09/2020. The illustrated products may differ from standard specification products. Subject to errors and changes.