



# ATTACHMENTS

AND ACCESSORIES

INNOVATION WITH TRADITION FOR LIFE.

---

## DURABLE EQUIPMENT VIABLE SOLUTIONS



For more than 50 years, Hauer has been developing and manufacturing loader attachments in Lower Austria. State-of-the-art technology and many years of experience are the basis for the traditionally high quality of Hauer products. Hauer attachments stand out for their exceptional longevity and value for money. The use of proper and top-quality materials in combination with the right design and a countless number of small details is instrumental in the manufacture of attachments for agriculture and forestry.

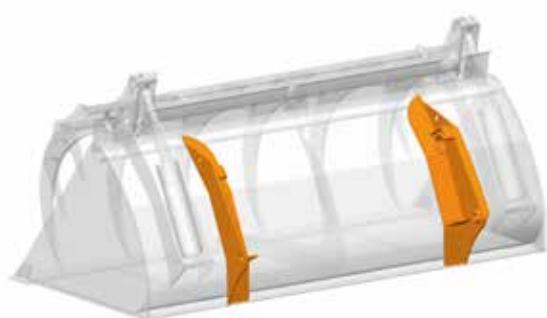
Furthermore, perfect welds applied in a perfect position by robotic systems guarantee a long service life and an optimum operating weight. Finally, Hauer attachments are touched up by a two-component paint finish that is dried by heated air to give effective protection from corrosion for many years to come. Attachments come in the standard Hauer orange and matt black livery; special colour schemes are available on request.



# THE PERFECT SOLUTION FOR ALL CARRIAGES

## STANDARD HOOKS

Choose between the tried and tested Hauer hooks which stand out for their robust, snug-fit design and the universal EURO hooks that are also available for all Hauer attachments.



Hauer hooks



EURO hooks

## HOOKS FOR OTHER BRANDS

Hauer attachments are also available with bespoke hooks that suit a wide range of loader makes and models. Hauer pays particular attention to the correct linkage angle for a perfectly functioning parallel guidance.

- Compact loaders (wheeled, skid-steer, telescopic)
- Other front loader makes





## HAUER ATTACHMENTS FOR ALL APPLICATIONS

Hauer develops attachments for a wide range of requirements and areas of application.

Buckets for light materials are used for bulk materials with a specific mass of  $\leq 1000 \text{ kg/m}^3$ , such as snow, grain or wood chips. Earth buckets are used for other heavier materials such as soil or gravel.



## LIGHT MATERIAL BUCKET LONG VERSION – LGS-L

- Handles light materials like snow, grain, woodchips
- Curved design for easy removal of sticky materials
- Right-angle rear edge for scraping in reverse
- High-grade and hard-wearing steel cutting edge (approx. 450 HB)
- A second cutting edge is an option

Width mm	Weight kg	Cutting edge mm	Volume SAE m <sup>3</sup>	Height mm	Depth mm
1800	223	150 / 16	0,92	800	1000
2000	239	150 / 16	1,02		
2200	269	150 / 20	1,12		
2400	285	150 / 20	1,23		

## LIGHT MATERIAL BUCKET LONG AND REINFORCED – LGS-LV

- For heavy-duty applications
- Base reinforced by extra and stronger wear strips
- Extra thick sides
- Reinforced scraping angles at the base
- 20mm cutting edge (plus 4mm)
- A second cutting edge is an option



Width mm	Weight kg	Cutting edge mm	Volume SAE m <sup>3</sup>	Height mm	Depth mm
2000	282	150 / 20	1,02	800	1000
2200	304	150 / 20	1,12		
2400	326	150 / 20	1,23		
2600	367	200 / 20	1,34		

## LIGHT MATERIAL BUCKET SHORT VERSION – LGS-K

- Identical with the light material bucket (long version)
- The shorter design and reduced capacity suit smaller loaders
- A second cutting edge is an option

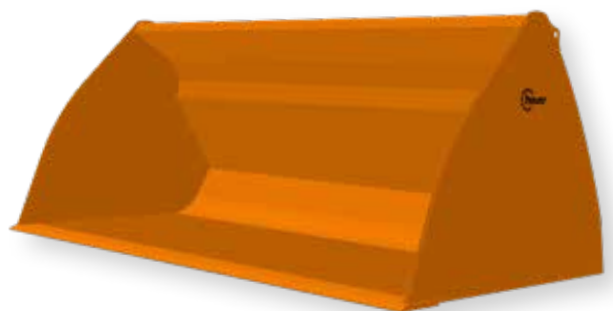


Width mm	Weight kg	Cutting edge mm	Volume SAE m <sup>3</sup>	Height mm	Depth mm
1800	183	150 / 16	0,68	670	870
2000	198	150 / 16	0,76		
2200	222	150 / 20	0,84		
2400	237	150 / 20	0,92		



## LIGHT MATERIAL BUCKET – LGS XL

- Optimised bucket design (replaces high-volume bucket GVS)
- For large volumes of light bulk material such as fertiliser, bark mulch or wood chips
- High filling volume with the lowest possible weight
- Cutting edge made from high-tensile and hard-wearing 450 HB steel
- A second cutting edge is an option



Width mm	Weight kg	Cutting edge mm	Volume SAE m <sup>3</sup>	Height mm	Depth mm
2000	346	150 / 20	1,56	1030	1275
2200	379	150 / 20	1,73		
2400	422	200 / 20	1,89		
2550	444	200 / 20	2,00		

## LIGHT MATERIAL BUCKET – LGS XXL

- For even larger handling volumes of light material such as grain, wood chips or snow
- High filling volume with the lowest possible weight
- Cutting edge made from high-tensile and hard-wearing 450 HB steel
- A second cutting edge is an option



Width mm	Weight kg	Cutting edge mm	Volume SAE m³	Height mm	Depth mm
2200	470	200 / 20	2,41	1230	1475
2400	500		2,64		
2550	529		2,79		
2800	579		3,10		



## HIGH-TIP LIGHT MATERIAL BUCKET – HKLGS-2

- Optimised bucket shape to minimise material loss / spillage (replaces HK-LGS)
- 1900 mm additional dump height
- Optimum bucket interior with flat bucket base
- Rounded edges on the inside for handling sensitive loads
- StVO-compliant maximum external width

Width mm	Weight kg	Cutting edge mm	Volume full to the brim m³	Volume SAE m³	Height mm	Depth mm
1800	420	150 / 20	0,92	1,18	940	1230
2000	453		1,03	1,33		
2200	483		1,14	1,47		
2400	509		1,25	1,62		
2550	529		1,32	1,72		



## EARTH BUCKET – ES

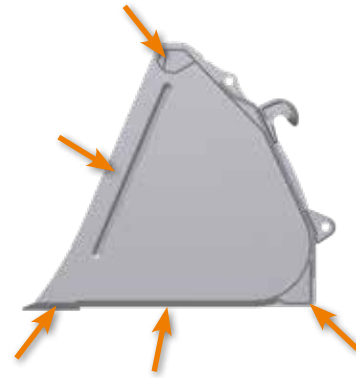
- Curved design for easy removal of sticky materials
- Right-angle rear edge for scraping in reverse
- High-grade and hard-wearing steel cutting edge (approx. 450 HB)
- Optional bucket teeth
- A second cutting edge is an option

Width mm	Weight kg	Cutting edge mm	Volume SAE m <sup>3</sup>	Height mm	Depth mm
1200	138	150 / 16	0,42	700	760
1400	169	150 / 16	0,47		
1600	185	150 / 16	0,53		
1800	203	150 / 16	0,60		
2000	219	150 / 16	0,67		
2200	257	150 / 20	0,73		
2400	275	150 / 20	0,80		



## HEAVY-DUTY EARTH BUCKET – ES-V

- For heavy-duty applications
- Stronger and more under-bucket wear strips
- Extra thick side plates
- Stiffening angle on the top edge
- Stronger scraping angle
- 20mm cutting edge (plus 4mm)
- Optional bucket teeth, optional second cutting edge



Width mm	Weight kg	Cutting edge mm	Volume SAE m <sup>3</sup>	Height mm	Depth mm
1600	215	150 / 20	0,53	700	760
1800	235	150 / 20	0,60		
2000	254	150 / 20	0,67		
2200	274	150 / 20	0,73		
2400	295	150 / 20	0,80		
2600	331	200 / 20	0,87		

## UNIVERSAL BUCKET - UVS

- For loading larger volumes of heavy bulk materials as for example gravel with large front loaders
- 2 webs inside, stiffening angle on the top edge inside, reinforce linkage with SWE-Euro
- A second cutting edge is an option



Width mm	Weight kg	Cutting edge mm	Volume SAE m <sup>3</sup>	Height mm	Depth mm
2400	395	150 / 20	1,23	800	1000
2600	442	200 / 20	1,34		

## 5-IN-1 MULTIFUNCTION BUCKET - MFS

- One bucket serves five different functions: loading, scraping, grappling, controlled unloading, dumping at increased height
- Right-angle rear edge for scraping in reverse
- The moving part of the scoop features the robust box girder design
- Three cutting edges are standard specification
- High-grade and hard-wearing steel cutting edge (approx. 450 HB)



Width mm	Weight kg	Cutting edge mm	Volume SAE m <sup>3</sup>	Opening mm	Height mm	Depth mm
1600	363	150 / 16	0,53	963	800	760
1800	391	150 / 16	0,60			
2000	418	150 / 16	0,67			
2200	469	150 / 20	0,73			
2400	500	150 / 20	0,80			



## HIGH-TIP SILAGE GRAB - HK-SGS

- Loads towards a wall with down holder opened
- 1,500mm extra dump height
- Sturdy grab with curved tines and powerful hydraulic rams
- Side tines on the down holder are a standard feature
- High-grade and hard-wearing steel cutting edge (approx. 450 HB)

Width mm	Weight kg	Cutting edge mm	Volume full to the brim m <sup>3</sup>	Volume SAE m <sup>3</sup>	Max. jaw opening mm	Height mm	Depth mm
1800	680	150 / 20	0,58	1,00	1430	800	870
2000	703		0,65	1,10			
2200	743		0,72	1,25			
2400	774		0,79	1,35			
2600	815		0,86	1,45			



## SILAGE GRAB BUCKET – SGS-3

- Optimised bucket design (replaces SGS-2)
- Rugged design and high quality material with reinforced lateral parts, and reinforced wear strips
- Loading towards a wall is also possible when down holder is fully opened
- Strong and sturdy down-holder with curved flat-band tines mounted in three bearings
- High-grade and hard-wearing steel cutting edge (approx. 450 HB)
- A second cutting edge is an option

Width mm	Weight kg	Cutting edge mm	Volume full to the brim m <sup>3</sup>	Volume SAE m <sup>3</sup>	No of gripper tines / bearing / internal wear ribs	Max. jaw opening mm	Height mm	Depth mm
1600	464	150 / 20	0,59	0,82	6 / 2 / 1	1310	810	1020
1800	489		0,67	0,92	6 / 2 / 1			
2000	517		0,74	1,02	6 / 2 / 1			
2200	583		0,82	1,13	8 / 2 / 2			
2400	605		0,89	1,23	8 / 2 / 2			
2550	622		0,94	1,30	8 / 2 / 2			

## SILAGE GRAB FORK – SGG

- Removes grass and maize silage and handles solid manure
- Sturdy and heavy-duty tines are threaded into conical sleeves
- Sturdy down holder with curved tines and high-power rams
- Side tines on the down holder are a standard feature



Width mm	Weight kg	Number of tines	Volume m <sup>3</sup>	No of gripper tines / bearing / internal wear ribs	Opening mm	Height mm	Tine length mm
1800	492	12	0,85	6 / 3 / 1	1320	850	800
2000	530	13	0,95	6 / 3 / 1			
2200	557	14	1,05	7 / 3 / 2			
2400	603	16	1,15	8 / 3 / 2			

## MANURE FORK - DG



- Thick-walled steel tube with welded-in sleeves
- Conical sleeves ensure tight-fit tines
- Choice of two tine lengths
- Strong back wall for maximum stability

Width mm	Weight kg	Number of tines	Tine length mm
1200	117 / 127	7	800 / 1000
1400	130 / 141	8	
1600	143 / 156	9	
1800	157 / 172	10	
2000	170 / 186	11	
2200	184 / 200	12	
2400	225	13	1000

## BEEF BUCKET – RK

- Bespoke design for efficient yet gentle handling of beet crop
- Generous spacings allow soil to drop from the load
- Large volume for fast loading cycles
- Low operating weight for high payloads

Width mm	Weight kg	Volume SAE m <sup>3</sup>	Height mm	Depth mm
1800	238	1,10	1000	1070
2000	255	1,20		
2200	272	1,30		
2400	290	1,50		





## MULTI CROCO BUCKET – MKS

- Reduced volume specifically designed **for compact wheel loaders and skid-steers**
- Curved design for easy removal of sticky materials
- Loads towards a wall with down holder fully opened
- Low operating weight
- High-grade and hard-wearing steel cutting edge (approx. 450 HB)
- Side plates and an extra cutting edge are options

Width mm	Weight kg	Cutting edge mm	Volume m <sup>3</sup>	Max. jaw opening mm	Height mm	Depth mm
1000*	195	150 / 16	0,36	1080	725	705
1200*	217		0,43			
1400	236		0,50			
1600	256		0,58			
1800	277		0,65			
2000	308		0,72			

\* 1000 - only with loader carriage of compact loaders; 1200 - only with Euro carriage or loader carriage of compact loaders

## MULTI CROCO FORK - MKG

- Specifically designed **for compact wheel loaders and skid-steers**
- Low operating weight
- Curved back for easy removal of sticky materials
- Conical sleeves ensure tight-fit tines



Width mm	Weight kg	Number of tines	Volume m <sup>3</sup>	Max. jaw opening mm	Height mm	Tine length mm
1000*	185	6	0,36	1060	760	600
1200*	197	7	0,43			
1400	213	8	0,50			
1600	232	9	0,58			
1800	250	10	0,65			
2000	275	11	0,72			

\* 1000 - only with loader carriage of compact loaders; 1200 - only with Euro carriage or loader carriage of compact loaders



## MULTI GRAB BUCKET- MGS

- Large volume
- Massive down holder suits all kinds of work
- Curved design for easy removal of sticky materials
- Large jaw opening
- High-grade and hard-wearing steel cutting edge (approx. 450 HB)
- Side plates and an extra cutting edge are options

Width mm	Weight kg	Cutting edge mm	Volume m <sup>3</sup>	Max. jaw opening mm	Height mm	Depth mm
1400	307	150 / 16	0,80	1310	930	845
1600	338	150 / 20	0,94			
1800	366	150 / 20	1,06			
2000	403	150 / 20	1,18			
2200	433	150 / 20	1,30			

## MULTI GRAB FORK - MGG

- Massive down holder suits all kind of work
- Curved back for easy removal of sticky materials
- Large jaw opening



Width mm	Weight kg	Number of tines	Volume m <sup>3</sup>	Max. jaw opening mm	Height mm	Tine length mm
1400	274	8	0,80	1290	960	800
1600	296	9	0,94			
1800	317	10	1,06			
2000	351	11	1,18			
2200	373	12	1,30			



## BALE CUTTER - SBS

- Heavy-duty build
- 4 heavy duty tines 1000mm, 2 heavy duty tines outside 1000mm
- Large opening width
- Extended side section of the cutting arm for protection of the cutting edge when parking
- Down holder with ball joint bearing
- optional film catcher
- 3-point attachment instead of Euro or Hauer attachment, combined 3-point and Euro attachment, or multiple mount options



Opening width mm	Width mm	Tine length mm	Weight kg
1465	1794	1000	405

## BALE FORK – BTG 4

- Large opening suits all types of round bales
- Protective rollers for gentle handling of silage bales
- Ideal tine length avoids damaging other bales in the stack
- Designed for the transport and stacking of lying bales without reducing the lifting height
- Combined three-point/Euro carriage is an option
- Optional equaliser bar opens the spikes in synch.
- Strong back wall for maximum stability



Opening mm	Bale support length mm	Weight kg
660 - 1560	1050	180

## SILAGE BALE GRAB – SBZ 915

- Perfect opening for silage bales
- For the transport and stacking of standing bales without reducing the lifting height, as well as moving and setting up the bales
- Check valve ensures firm grip of silage bales
- Optional mounting plates for attachment to 3-point / Euro carriage
- Optional mounting plates for attachment to 3-point / Hauer carriage
- Optional 3-point attachment



Bale diameter mm	Weight kg
950 - 1500	187

## ROUND BALE GRAB - RBZ 919

- Large opening thanks to specific kinematics
- For the transport and stacking of standing bales without reducing the lifting height, as well as moving and setting up the bales
- Check valve for optimum grip
- Pivot pins in replaceable bronze bushings
- Reduced 1,500mm jaw opening by refitting the arms



Bale diameter mm	Weight kg
900 - 1900	237

## SQUARE BALE GRAB - QBZ

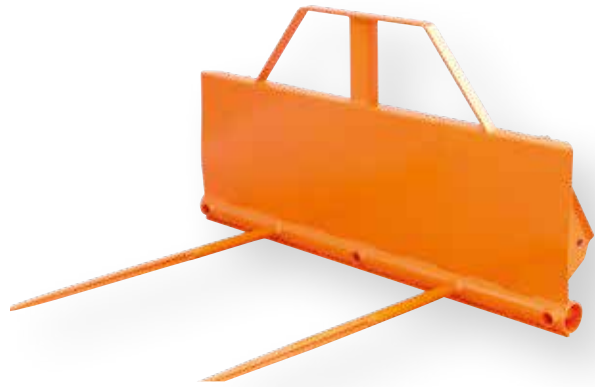
- for handling square wrapped silage bales as well as straw and hay bales up to 1500kg
- Check valve for optimum grip
- optional anti-slip device with tubes at the back, that can be retracted into pipes for unhampered visibility



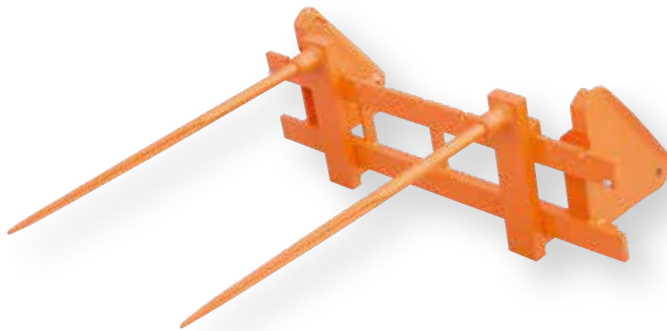
Opening mm	Weight kg
600 - 2000	330

## BIG BALE FORK - GBG

- Ideal for transporting round and square bales
- Two robust big bale tines are standard specification
- Accepts up to five tines
- The tines are threaded in welded conical sleeves



Width mm	No. of tines	Tine length mm	Height mm	Weight kg
1500	2 - 5	1100	790	101
		1400		105



## PALLET FRAME WITH BIG BALE TINES - PR-GBZ

- Handles big bales
- The big bale tines can be retrofitted to the Hauer pallet frame
- Also available for ISO-FEM 2B pallet frames

Width mm	Tine length mm	Carrying capacity kg	Weight kg
1300	1100	max. 2000	124





## PUSH-FIT STOP TUBES

- Accessories for handling big bales
- Specified for the Hauer pallet frame
- The posts prevent square bales from slipping towards the tractor cab



Height mm	Weight kg
2000	71

## PUSH-ON TUBES

- For gentle handling of round bales
- The tubes are pushed on to the pallet tines
- Quick-fitting pin system



Tine length mm	Tine profile mm	Weight kg
960	80 / 40	32
1100	100 / 40	33

## BIG BALE FORK FOLDABLE - GBK

- Heavy-duty build
- Three big bale tines 1100mm, prepared for up to 5 tines
- Available also with heavy duty tines
- Frame construction optimised for good visibility
- Tine tube can be set fixed or with 15° pendulum – for easier parking and removal from the bale
- Manually or hydraulically foldable
- Manually or hydraulically extendable slip guards (max. frame height 2500mm)
- Broader tine tube (distance of outer tines 1900mm instead of 1700mm)
- Slip-off daggers 150 mm to prevent stacked bales from slipping sideways



Width mm	No. of tines	Tine length mm	Weight standard version kg
1800	3-5	1100	143



GBK, manually foldable, can be set to 15° pendulum



GBK hydraulically foldable, extended



## PALLET FORK – PG

- Versatile and efficient attachment
- Forged, high-grade tines
- Milled carriage for accurate control of tine spacing
- Also available with 3-point attachment



Tine length mm	Tine profile mm	Carrying capacity kg	Weight kg
960	80 / 40	1600	148
1100	100 / 40	2000	175
1200	100 / 40	2000	182



## PALLET FORK WITH FOLDABLE TINES - PG-K

- Enhanced road safety
- Quick-fit mechanism folds the tines upward

Tine length mm	Tine profile mm	Carrying capacity kg	Weight kg
1100	100 / 40	2000	190



## PIVOTING PALLET DEVICE – PD-2

- Easy to mount and retrofit to existing Hauer pallet frame
- Suitable for work on uneven ground
- Left-hand rotation as standard, can be converted to right-hand rotation
- Can be ordered also for fork lift with ISO FEM 2
- tines and pallet frame optional
- box holder arm 90° foldable, box width adjustable from 1200-1600mm, depth adjustable from 900-1100mm



Version	Tines adjustable mm	Carrying capacity kg	Rotation angle °	Weight kg
for Hauer pallet frame	300 - 1100	2000	-14 to +180	210
for ISO FEM 2 pallet frame	292 - 1054			228

## PALLET FORK WITH HYDRAULIC LATERAL FRAME ADJUSTMENT – PG-HS

- Fast tine adjustment left and right
- Convenient load shifts



Tine length mm	Tine profile mm	Carrying capacity kg	Weight kg
960	80 / 40	1600	261
1100	100 / 40	2000	288
1200	100 / 40	2000	295

## PALLET FORK ISO FEM II B

- with pallet frame 1300 mm width available
- ISO-FEM II tine attachment



Pallet frame mm	Frame height mm	Weight kg
1300	407	100

Tine length mm	Carrying capacity kg	Weight kg
960	1600	78
1100	2000	103
1200	2000	109

## PALLET FORK ISO FEM III B

- with pallet frame in 3 different widths available (1300, 1500, 2000 mm)
- ISO-FEM III tine attachment

Pallet frame mm	Frame height mm	Weight kg
1300	508	190
1500		215
2000		287

Tine length mm	Carrying capacity kg	Weight kg
1100	3000	120
1200		130
1500		185
1800		190
1100	5000	170
1200		185
1500		230
1800		280
2200		340

## ATTACHMENT ADAPTER

- Adapts the Hauer quick-change system to attachments with EURO couplers and vice versa



## CARRIAGE ADAPTER

- For attachments with EURO or Hauer couplers and third-party carriages on the loader



## 3-POINT ADAPTER

- For transporting three-point attachments with Cat 2 couplers to SWE Hauer or SWE EURO



## 3-POINT QUICK ATTACH CARRIAGE

- For attachments with Hauer or EURO couplers on a three-point linkage



## IMPLEMENT PROTECTION

- Protects cutting edges on buckets or tines on pallet forks
- Easy attachment with rubber bands
- Telescoping design for easy adjustment
- Warning tape for optimum visibility



Size	For attachment width mm	Height mm	Depth mm	Weight kg
klein	1240 – 1800	76	93	5
groß	2000 – 2600			7

## BIG-BAG-LIFTER - BBL

- A specific design for handling big bags with one or several loops
- High payload for handling big bags
- Curved design for clear visibility of the tip of the hook
- Picks up and deposits big bags without operators leaving the cab
- Bolted mounting plates for quick changeovers



Height mm	Payload kg	Weight kg
1540	1000	119



## SWIVEL HOOK

- XB BIONIC loaders are prepared as standard for fitting this hook
- POM-R loaders can be retrofitted with the hook including its mounting
- 360° swivel hook (endless)

Carrying capacity on XB Bionic kg	Carrying capacity on POM-R kg	Weight kg
3150	2500	2,5

## SWIVEL HOOK EXTENSION ARM

- Thick-walled, sturdy tube
- Telescoping as an option

Length mm	Total length incl. telescoping tube mm	Weight kg
1500 / 2000	2500 / 3000	132



## CAGE - AK2

- Modular system
- Basic cage with roof frame is TÜV-approved
- Operation and approval is subject to country-specific regulations
- optional underframe (1200mm higher)
- optional roof frame with mesh back
- optional roof
- optional tool box and wooden handrail lining
- optional safety package for Hauer front loader available

Cage width mm	Cage depth mm	Cage height mm	Carrying capacity kg	Weight basis device kg	Weight full specification kg
1280	800	1250 / 2150	280	144	259

## MOUNTED STACKER 1700 POM - AS

- Increases the lift height of a pallet fork or safety cage by 1,700mm
- Integrates an external and an internal mast that offer infinitely variable height control
- High payload at maximum lift height
- A tipping valve is integrated in the loader's crowding line for controlled unloading.
- Pallet forks adjust from 300mm to 1,200mm in five increments
- An adapter and a tap in the lifting line are available for use with a safety cage. The adapter provides the statutory precision-fit connection between the cage and the stacker. The tap controls the lift and lowering rates.

Lift height mm	Lift power kg	Weight kg
1700	1000	294





### 3-POINT-WEIGHT

- Compact design
- Robust steel casing avoids losing concrete
- Optimum attachment points for easy attachment and removal
- Shunting hitch for work on private sites
- Standard reflective tape



Weigh with concrete kg	Hooks Cat.
450	2
700	2
1000	2
1250	2
1500	2
2000	2 / 3
2500	2 / 3

### REAR WEIGHT

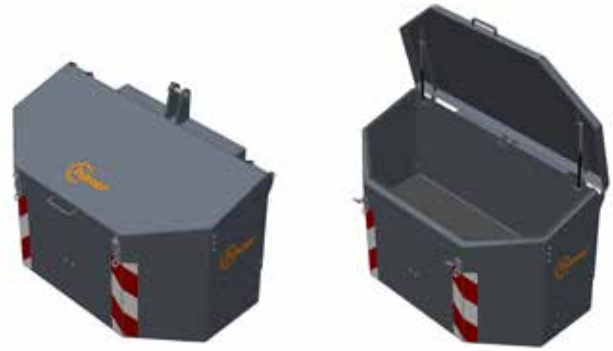
- Attached to linkage drawbar
- Made from reinforced concrete
- Available without concrete as an option for DIY purposes



Weight with concrete kg	Hooks Cat.
650	1 / 2
750	1 / 2

## TOOL BOX WITH BALLAST

- Practical solution to store tools
- Sealed and lockable storage room
- As standard with reflector stripes and anti-slip mat
- Additional equipment: Side marker lamps, underride protection, head light, divider, work bench, draw bar
- Weight in suitable sizes



Weight with concrete kg	Width mm	Depth mm	Height closed mm	Height opened mm	Filling volume l	Hooks Cat.
450	1345	845	800	1485	380	2 / 3
700	1345	845	800	1485	380	2 / 3
1000	1645	845	800	1485	475	2 / 3
1250	1645	845	800	1485	380	2 / 3
1500	1645	960	800	1485	325	2 / 3



Side marker lamps



Underride protection



Work bench



Divider



Draw bar

## TOOL BOX WITHOUT BALLAST

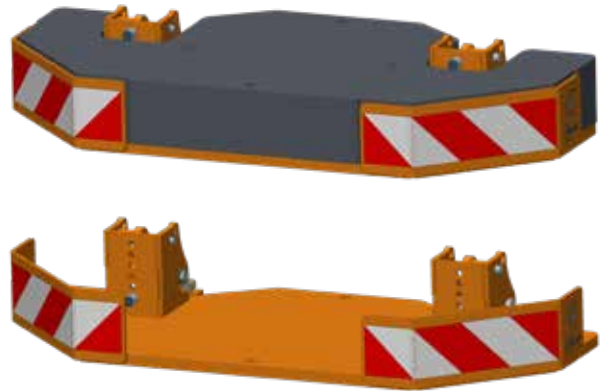
- Practical solution to store tools
- Sealed and lockable storage room
- As standard with reflector stripes and anti-slip mat
- Practical additional equipment: side marker lamps, underride protection, divider, work bench, head light with magnetic holder, name badge



Filling volume l	Width mm	Depth mm	Height closed mm	Height open m	Hooks Cat.	Weight kg
455	1345	785	800	1485	1 / 2	180
570	1645	785			1 / 2	205

## ADHESIVE WEIGHT

- For trailer operation
- For attaching with 3-point
- 2 sizes with 7 weight variations each
- Modular design, can be extended with plates
- Compact and space-saving
- Individually adjustable to the lower links angle with position stop
- Position stop for direct attaching and parking
- As standard with reflector stripes
- Hooks category 2 or 3



Type	Weight plates nr.	Width mm (B)	Depth mm (T)	Hooks Category	Weight kg
small	0	1600	765	2/3	275
	1				475
	2				675
	3				875
	4				1075
	5				1275
	6				1475
large	0	2000	855	2/3	375
	1				675
	2				975
	3				1275
	4				1575
	5				1875
	6				2175



Position stop for direct attaching and parking



Adhesive weight without weight plates



## TIPPING BOX - KM

- High load capacity
- Very efficient dumping of bulk materials due to flat inside walls and a large tilting angle
- Easily accessible flat ground
- StVO-compliant maximum external width and depth
- Depth of the box adapted to euro pallet size
- Optional: swivel parts, attachment walls, stanchions to transport logs, LED lights, tool holder, tool box, combi-attachment with 3-point



Outside width mm	Inside width mm	Height mm	Front height mm	Rear height mm	Depth mm	Inside depth mm
1900	1680	945	500	600	1485	1250
2200	1980					
2550	2330					

Outside depth m	Volume m <sup>3</sup>	Volume with attachment walls m <sup>3</sup>	Payload / tipping load kg	Weight kg
1900	1,16	2,10	4500	523
2200	1,34	2,44		573
2550	1,54	2,82		628





**PREMIUM QUALITY  
MADE IN AUSTRIA.**  
DURABILITY - THE BASIS OF  
PROFITABILITY.

All Hauer products are manufactured in our factory in Lower Austria. Premium-quality materials, advanced manufacturing technology and the long-lasting experience of our staff combine with an active quality assurance programme to give our products the durability and longevity our customers deserve.

These are the ingredients of the traditional Hauer quality made in Austria that warrants highest productivity and best value for money.

Attachments from Hauer are a pleasure to use – today and tomorrow.





THE SUITABLE  
ORIGINAL ATTACHMENT  
FOR FORESTRY.

An extract from our product range of forestry attachments.





**Franz Hauer GmbH & Co KG**  
A-3125 Statzendorf, Werksstraße 6  
Tel.: +43 (0)2786 7104-0  
info@hfl.co.at | www.hfl.co.at